

# Coantec C40 series Coantec Ultra HD Mega Pixel Industrial Videoscope



- 720P HD Industrial camera
- User-friendly insertion tube exchange
- 2/2.8/3.9/4.8/6mm tubes optional
- Powerful software functions
- Lifetime warranty for rear-mounted LED lights
- Strong environmental adaptability



reddot design award

## SHENZHEN COANTEC AUTOMATION TECHNOLOGY CO.,LTD.

No.3, Crosslane 3, Yuanhu Road, Zhangbei,Ailian,Longgang District, Shenzhen, China,518172

Tel : +86 -755- 8972 8626 Fax : +86 -755- 8978 6196

E-mail : zyd@chinavideoscope.com Web : www.chinavideoscope.com



YouTube



Facebook



Coantec Website



## Customized Services

We provide more customized services, we can add the functions according to your request:

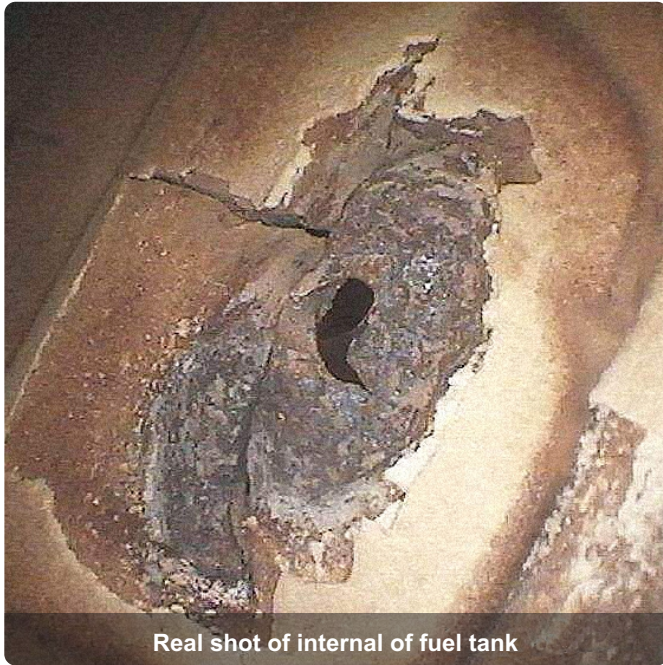
- Tube length, diameter and lighting mode can be customized
- Can add scale ruler on the tube
- Software function customization
- Customized replaceable forward view and side view camera
- Foreign matter clamping set
- WiFi module and recording module can be customized

For more customized solutions, please contact us.

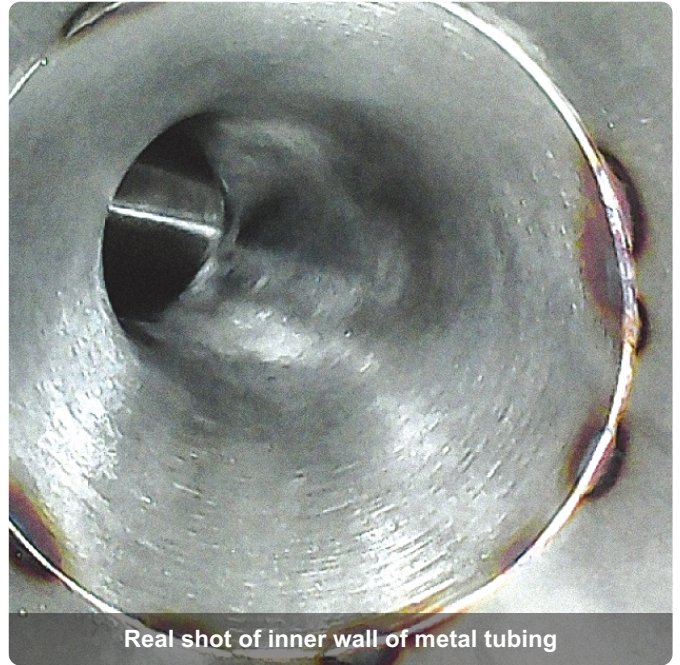
## ✓ Brief introduction of C40 series

The C40 series is a 360° all-way articulation industrial videoscope independently developed and produced by Coantec. This product uses a 3.5-inch HD display, an ultra-high-definition camera, waterproof and dust-proof level of inserted tube up to IP67, and customized oil proof tube, which is suitable for more severe environment. Users can replace the insertion tubes with different diameters and lengths

independently, realizing multi-purpose of one machine and saving cost effectively. The whole machine adopts integrated design, which is lighter and portable, and can be used in aviation, energy and electric power, mechanical casting, automobile manufacturing, special inspection and other fields. It can detect surface defects inside various equipments or the inner cavity of parts.



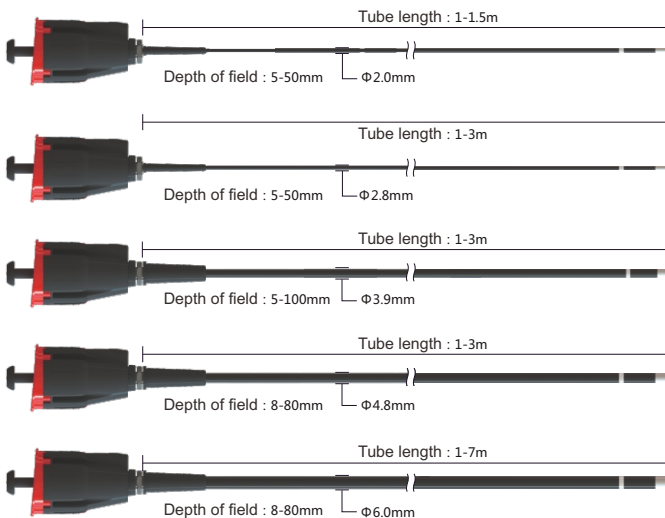
Real shot of internal of fuel tank



Real shot of inner wall of metal tubing

## ✓ User-friendly insertion tube exchange

One host can be equipped with tubes with different diameters(2-6mm), lengths, depth of field, in order to satisfy the demands in different inspection applications.

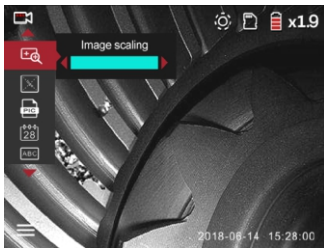


## High quality image

It can shoot images and videos with clear image quality to help users conduct comprehensive and detailed diagnosis and analysis



## ✓ Powerful software functions



Supports 4 times digital zoom

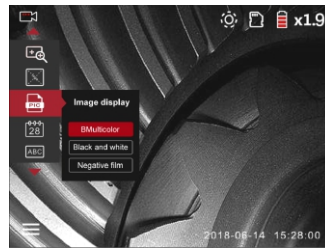
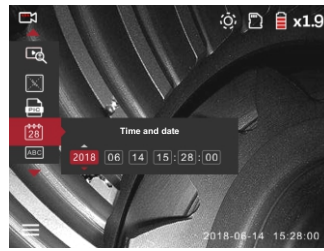
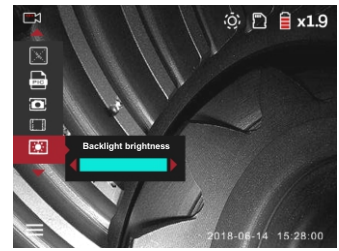


Image display color/black and white/negative optional



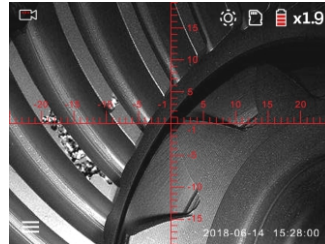
Ability to add time/date watermarks



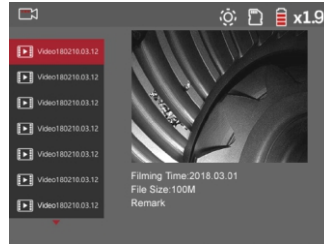
Display backlight brightness adjustable



Real time detection image rotation



Cross cursor guide



Picture and video list preview mode



Video playback function

## ✓ Strong environmental adaptability



### Technical Specification

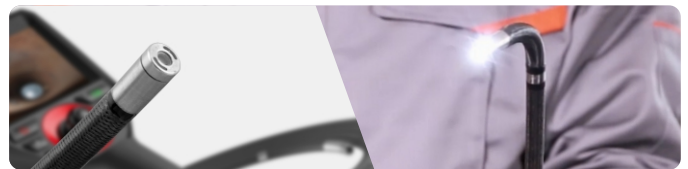
Host	
Display Dimension	3.5-inch HD display
Display Resolution	640*480
Digital Zoom	Support real-time 4x zoom ,8x partial zoom when playback
LED Brightness Level	0-7 level adjustment
Assistant Measurement Function	Cross cursor
Photo/Video	Can take images and videos, and snapshot when recording
Document Format	Image:JPEG/BMP; Video:MP4
Image Rotation	0°/90°/180°/270°
Image Preview	List mode/full screen mode
Screen Backlight brightness	3 -level adjustment
Output Port	Micro HDMI
Menu Language	Simplified Chinese, Traditional Chinese, English, Japanese, Korean, French, German, Portuguese, Spanish, Russian, Italian, Dutch etc.
Host Dimension	240mm*102mm*126mm
Package Dimension	411mm*321mm*165mm
Host Weight	0.65kg(include base,battery)

Tube					
Probe Diameter (±0.1mm)	Φ2	Φ2.8	Φ3.9	Φ4.8	Φ6
Camera Pixels	160,000	160,000	1,000,000	1,000,000	1,000,000
View Direction	Forward	Forward/Side	Forward/Side	Forward/Side	Forward/Side
Depth of Field	5-50mm	5-50mm	5-100mm	8-80mm	8-80mm
Field of View	120°	120°/70°	120°/70°	120°/70°	120°/70°
Tube Length	1-1.5m	1-3m	1-3m	1-3m	1-7m

3

## Warranty for rear-mount LED lights

Rear-mount LED lights under warranty for lifetime



### Application Fields

It can be widely used in aerospace, special inspection industry, energy and power, automotive aftermarket, automobile manufacturing, shipbuilding, rail transit, petrochemical industry, food and drug machinery, mold casting, mechanical processing, construction engineering, police safety, military equipment, testing of municipal pipelines, university research institutes and many other fields.

Tube	
Lighting Mode	Rear-mounted LED, optical fiber
Joystick Control	360° all-way articulation
Probe Unidirectional Bending Angle	Tube length≥3m:150°, Tube length 3-5m:120°, Tube length≥7m: 90°
Tube Material	Tungsten alloy wire wear-resistant braided tube
Probe Material	Hard alloy protective shell
Joystick Control	Mechanical control
Compatibility	Replaceable Tube
Protective Device	Buffer protection device for connecting host and wear-resistant tube
Probe Waterproof Level	IP67

Power	
Power Supply	Rechargeable lithium battery (with reverse battery protection.)
Battery	3.7V,3200mAh
System Operating Time	≥4H

Operation Environment	
System Operating Temperature	-10°C-50°C
Probe Operating Temperature	-20°C-60°C
Storage Temperature	-20°C-60°C
Relative Humidity	15%-90%

Configurations	
Standard Configurations	C40 videoscope x1, instrument case x1, magnetic base x1, lithium battery x1, charger x1, card reader x1, 8G TF card x1, anti-fall hand strap x1, user manual x1, precautions for use x1